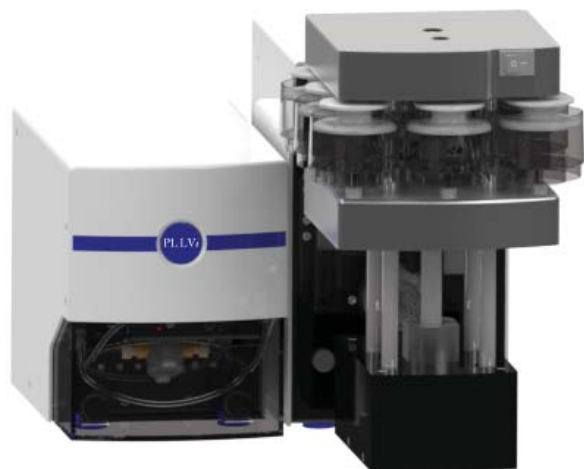


PREPLINC

Solid Phase Extraction Modules

The **PrepLinc™ SPEi and LVi Solid Phase Extraction Kits** from J2 Scientific accentuates our line of full-featured automated sample preparation instruments. Both use positive pressure for consistent flow sample to sample and run to run. The intuitive software and range of parameters make method development easy. Automating a manual SPE method is simple and fast.

The **SPEi Inline Solid Phase Extraction Kit** adapts to columns from 1mL to 15mL. It is ideal for sample and elution volumes up to 50 mL. Each column module holds 9 columns and the system can accommodate up to 5 column modules.



The **LVi Large Volume Injection SPE Kit** is optimized for SPE extractions on large volume samples. Specialized SPE column modules accommodate water extraction discs, as well as, standard SPE columns. The precision of the LVi pump module gives the necessary control of sample introduction to the extraction media and lets you choose priorities for flow vs. pressure. When combined with an optional standard column module, secondary cleanup or drying steps can be performed.

Cartridges

Compatibility

SPEi uses cartridges from 1mL to 15mL, plus many specialty and flash columns. The LVi accommodates larger SPE cartridges & discs.

Multi-Column

Program multi-column methods, eluting directly from one column to the next saving time and equalizing conditions.

Solvent Select

The system has the ability to program up to 12 different solvents or solvent mixes in a single method.

Positive Pressure

The use of positive pressure sample injection and solvent elutions is precise and repeatable. Pressure monitoring protects samples & equipment.

Reverse Elution

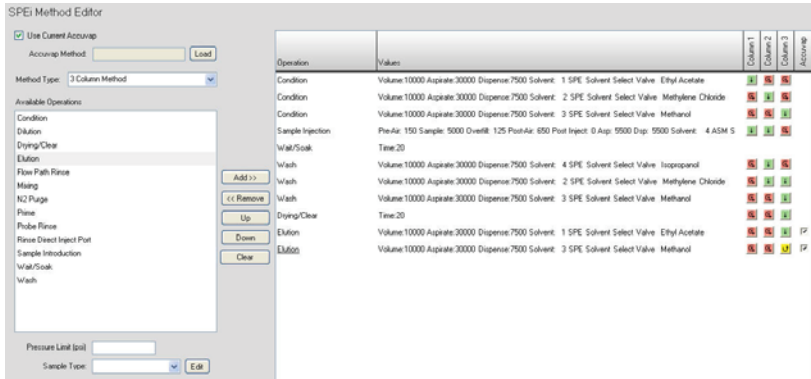
The only automated SPE system to offer reverse elution through any cartridge at any stage in the method.

J2 SCIENTIFIC

J2 Scientific GmbH, Reifenstuelstr. 3, D-80469 München
Tel.: +49 (0)89 72069587, info@j2scientific.eu

SPEi Method Editor

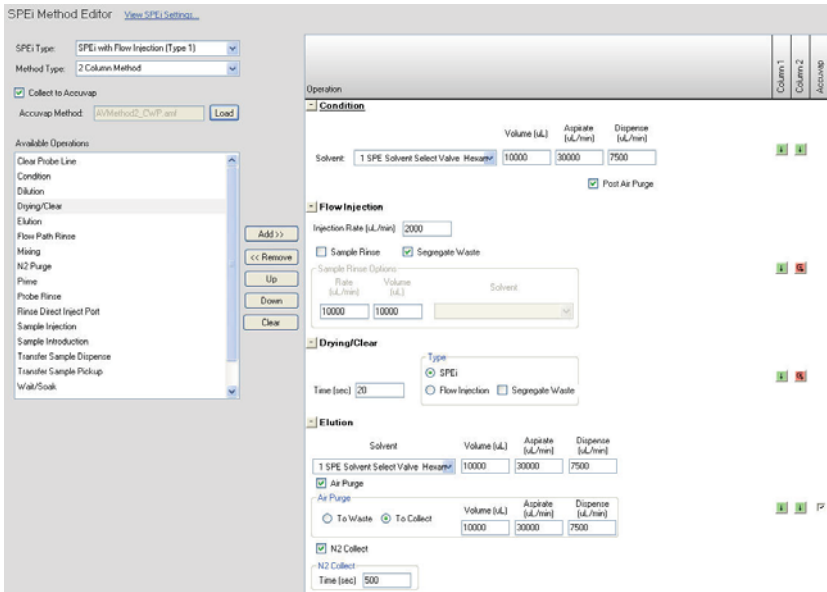
Create simple, single-column or complex, multi-column methods through the same intuitive method editor.



This example of a multi-column method shows the real flexibility of the PrepLinc™ software. Three SPE columns are used for this example. Condition and wash steps are performed to move the sample through all three columns. A reverse elution is performed on one of the columns for the final collection. Both elutions are evaporated using the optional AccuVap and can be collected in separate vials.

LVi Method Editor

Programming options unique to large volume samples and water extractions.



This LVi method example uses two columns inline and the AccuVap™ for concentration. Both columns (water extraction disc and Na₂SO₄ column, for example) are conditioned. The LVi pump module is used to introduce the sample onto the the first column only. There is a bottle rinse performed and the water waste is segregated. A drying time is programmed to remove all water from column one. The analyte elution is then performed through both columns and the is sent to the AccuVap™ for concentration.

Optional PrepLinc Modules

Use the SPEi as a stand-alone automated SPE system or integrate with other PrepLinc™ modules, like the AccuVap™ Evaporation module or GPC Cleanup module for a completely automated sample prep system.

Chart your course.



J2 Scientific GmbH, Reifenstuelstr. 3, D-80469 München
Tel.: +49 (0)89 72069587, info@j2scientific.eu

ANTEC GmbH, Hauptstr. 4, D-82404 Sindelsdorf
Tel.: +49 (0)8856 9910, sales@antec.de